



EARLY CHILDHOOD COUNCIL OF LARIMER COUNTY

2010-2011 ANNUAL REPORT

LETTER FROM THE PRESIDENT OF THE BOARD

Dear Friends of the Early Childhood Council,

Our 2011 fiscal year (from July 2010 through June 2011) was marked by outstanding and successful collaborations to meet the needs of young children and the community in which they live. Our Council and its leadership received national recognition for its strong and innovative work.

Some of the key highlights of this year included the launching of a highly successful program for parents-to-be and parents of infants and toddlers (in collaboration with Weld County), community-wide programming to prevent and address health and mental health care issues, work to increase access to quality childcare by economically challenged families, and successful application for funding to fill in gaps in a year of difficult economics for our own organization due to state budget cuts. The Early Childhood Council is really making a difference in the lives of the children and families in Larimer County and beyond.

Our thanks go to all of our 2010-2011 funders and partners for working collaboratively with the Council to better serve children in Larimer County.

Karen Caplovitz Barrett, Ph.D.
President, ECCLC Board of Directors

Over 1300 volunteer
hours supported
Council work.



LARIMER COUNTY WORKS TOGETHER!

In the fall of 2010, the State of Colorado conducted its first annual "Collaboration Survey" of all early childhood councils around the state. This Collaboration Survey was developed by the University of Denver and is a reliable tool for measuring the authenticity of the collaborative process.

We sent out the survey to 67 community members who were actively involved with the Council over the previous year, and had a 73% response rate. According to the University of Denver, *"The ECCLC is an incredibly strong collaborative with high levels of commitment, trust, and effective leadership. Virtually all stakeholders report that the ECLC enjoys 'good leadership, good direction and focus, is data driven, and committed to understanding the community'.....The commitment to the council's goals and the stakeholder's willingness to put forth whatever energy necessary to help reach goals makes the group feel productive."*

WORKING TOGETHER SO CHILDREN THRIVE

OUR PARTNER IN ESTES PARK

Estes Valley Investment in Childhood Success (EVICS) is increasingly recognized as the primary resource for childcare, parenting, and early childhood services, resources, and assistance in Estes Park. The EVICS Scholarship Program again experienced a record year in 2011, awarding over \$35,000 in child care tuition assistance to working parents. Licensed child care programs continue to be supported with increased training opportunities, resources, and information, targeted at improved quality of care.

One of the biggest successes of EVICS this year has been the addition of the nationally acclaimed Parents as Teachers (PAT) program, which was made possible by a grant from the Temple Hoyne Buell Foundation. The program extends and enhances the services already provided by the EVICS program, offering parents more comprehensive support not available from other community sources.

EVICS continues to work to support parents in accessing early childhood services and increase community investment through partnerships. EVICS vision continues to be a driving force of the work in Estes Park---that quality early childhood care and education is not only good for children, but is an economic necessity in order to maintain a strong workforce and attract and retain young families in the community .

LARIMER'S EFFORTS CONTINUE TO BE RECOGNIZED NATIONALLY

We are gratified that our community efforts continue to be recognized beyond our borders:

- ECCLC was one of 11 community programs in the country featured in *Putting the Pieces Together: Community Efforts to Support our Youngest Children 0-8*, published by the Administration for Children and Families, U. S. Department of Health and Human Services.
- ECCLC's Director Bev Thurber was part of the three person Colorado team participating in the National Children's Outcome Project (funded by the Nemours Foundation and the California Endowment).
- ECCLC's Quality Support Team Coordinator Lisa Sadar was invited to Montana's School Readiness Conference to participate in a panel of national experts discussing the implementation of the CSEFEL Pyramid model in communities and states across the country.
- ECCLC's Referral Program Coordinator Codi Delgadillo participated in the National Association for Child Care Resource and Referral Agencies (NACCRRA) pilot for an online provider update function. In response to her feedback, NACCRRA wrote "You have certainly gone above expectations with your pilot process...I am so impressed that you took the time to do this!! You certainly get a gold star for this work!"



52 parents completed Best Start for Babies classes in Larimer County.

SUPPORTING PARENTS THROUGH THE FIRST TWO YEARS

Best Start for Babies/ Toddlers (BSB/T) is an innovative, collaborative program that teaches parents about the importance of positive development in the early years of a child's life. The program started in Spring 2010 in partnership with United Way of Weld County Promises for Children (Weld County's Early Childhood Council). Each BSB/T session is offered as ten, 3 hour classes. Participants in the program are recruited with the assistance of community agencies serving the target population. During the 2010 – 2011 year, over 90 organizations publicized and referred families to the program.

BSB/T classes increase parents' ability to understand and meet their child's needs by presenting information on topics such as health, language and social emotional development, and appropriate discipline.

BABIES IN THE OFFICE!

During the winter of 2009-2010, the announcement that two ECCLC staff were pregnant generated joy, excitement and anxiety. As an organization that highly values children and the parent/child bond and is aware of the difficulty of finding child care, we wondered how to best support these new mothers. September 2010 was the implementation of our ECCLC “Babies at Work” policy.

Both Stella and Amelie, our beautiful office babies, joined us in the office a few days per week. Fortunately our new mothers were blessed with babies whose temperaments were easy going, who smiled more than they cried and continued to nap for extended periods of time.



One of the unexpected benefits of the “babies at work” policy was the impact on morale in the office. Nothing lifted the tension and frustration of hours working on a spreadsheet like a smile from our “office babies”. After six months in the office, we were sad to see them go. Both Stella and Amelie are now in wonderful child care

programs where they continue to thrive and grow with their peers.

ADDRESSING CHILDREN’S SOCIAL AND EMOTIONAL DEVELOPMENT

It is a given that children have some behaviors that adults find challenging. What shouldn’t be a given is that these behaviors place the child at risk for failure. Failure academically, socially and in life in general is often the result of children not learning appropriate skills to function in our society. Too often we can find ourselves managing children’s behavior instead of intentionally teaching social skills, teaching friendship building skills and even giving children clear expectations for their behavior. We do not do this with intention, it just happens. That culture is changing.

ECCLC has supported the Larimer Pyramid Implementation Team, which leads a community wide effort to build and/or support the internal capacity of early care and education programs to prevent behaviors and promote positive social skills. The collaborative efforts of school districts and experts in fields such as mental health, child care, infant/toddler, family partnership and others have made this effort successful. ECCLC received national recognition for this work by being asked to present at a School Readiness Conference in Montana this last spring. Our community’s work will continue in 2011-12, with a focus on more training and coaching for programs and individuals to address young children’s social emotional needs.

ACCESS TO QUALITY CHILD CARE – A GROWING CHALLENGE

Families needing child care faced even greater challenges in March of 2010, when our local Colorado Child Care Assistance Program (CCAP) experienced severe budget shortfalls, causing them to create a waiting list for families and cut reimbursement rates to child care providers. The CCCAP waiting list grew rapidly and the demand on the limited number of sliding fee scales was overwhelming. Our Child Care Referral Program worked hard to help families find affordable care, but also felt the desperation in the families’ voices when they couldn’t find affordable options. Anecdotally, we heard stories of families cutting back on hours of licensed care, using unlicensed alternatives, and patching together multiple types of care (e.g., neighbors, relatives). ECCLC has worked in partnership with United Way’s Pathways Past Poverty Initiative to increase access to affordable child care. It has been difficult to watch the economy undermine our efforts.

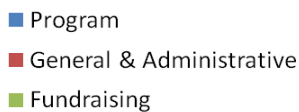
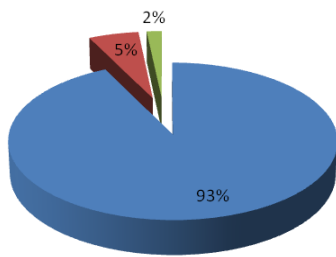
We provided over 850 hours of direct coaching support to 72 classrooms, which impacted over 1740 children community wide.

We offered 113.5 hours of training and awarded over \$37,000 in college scholarships to Early Childhood professionals.

BUDGET AND FINANCIALS

2010-11 Expenses

Total expenses = \$601,009



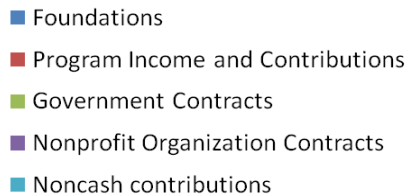
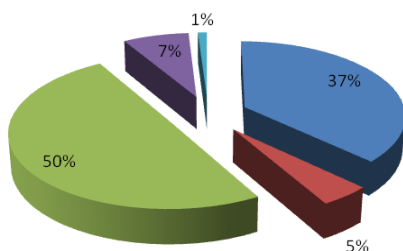
We deeply appreciate the support provided by the following major funders during our 2010-2011 fiscal year.

Bohemian Foundation
Colorado Department of Education
Colorado Department of Human Services
CO Department of Public Health and Environment (TGYS)
Colorado Trust
El Pomar Foundation's North Regional Council
Qualistar Colorado
Temple Hoyne Buell Foundation
Women's Foundation of Colorado

Our thanks also go to the many individuals and businesses who supported us with their generous contributions.

2010-11 Revenue

Total revenue = \$633,082



WEATHERING THE ECONOMY

2010-11 was a difficult economic year for most sectors of the economy. As a non-profit with significant government funded contracts, ECCLC was also impacted. In February 2011, the Colorado Department of Education grant that funds ECCLC's core services was frozen because of the state budget crisis. Ultimately, ECCLC received a 14 ½ % cut in that budget, which had to be absorbed in the final quarter of our fiscal year. Our priorities in absorbing the cuts were to minimize service impact and avoid staff cuts. The staff and community rallied. Our staff went "paperless", and sacrificed benefits such as mileage reimbursement. At Council meetings, our partners volunteered to provide the food we could no longer afford. The Pharos Fund of the Bohemian Foundation granted us a "general operating" grant to help replace some of the lost funds. Through these efforts, we were pleased to weather our budget crisis without any cuts in service.

Note: Some revenue received in FY 2010-2011 was carried over to FY 2011-2012.