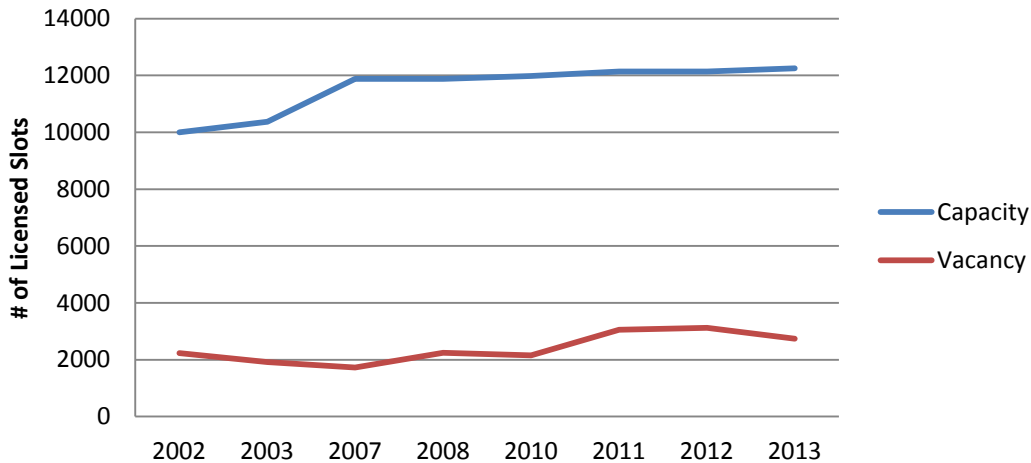
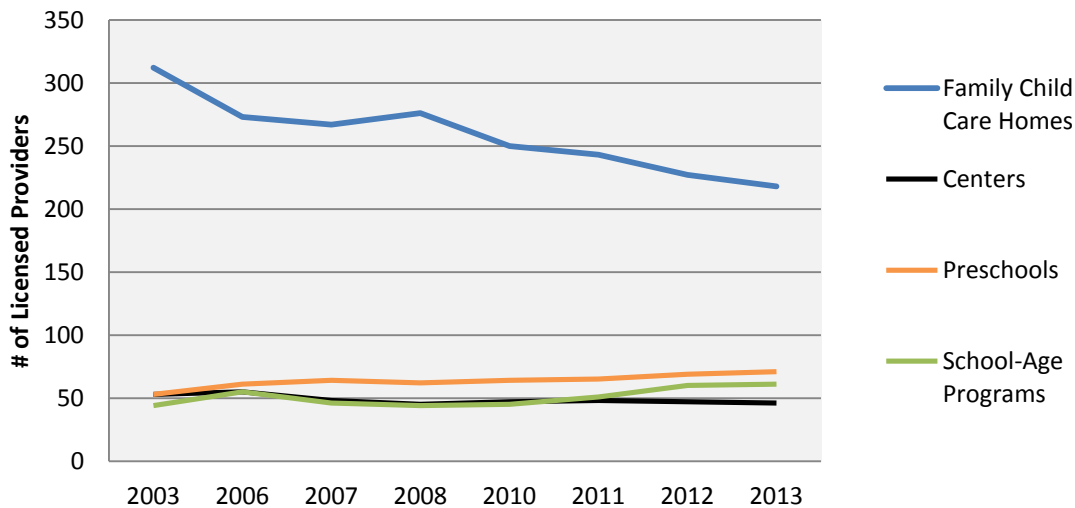


## Trend in Capacity and Vacancy



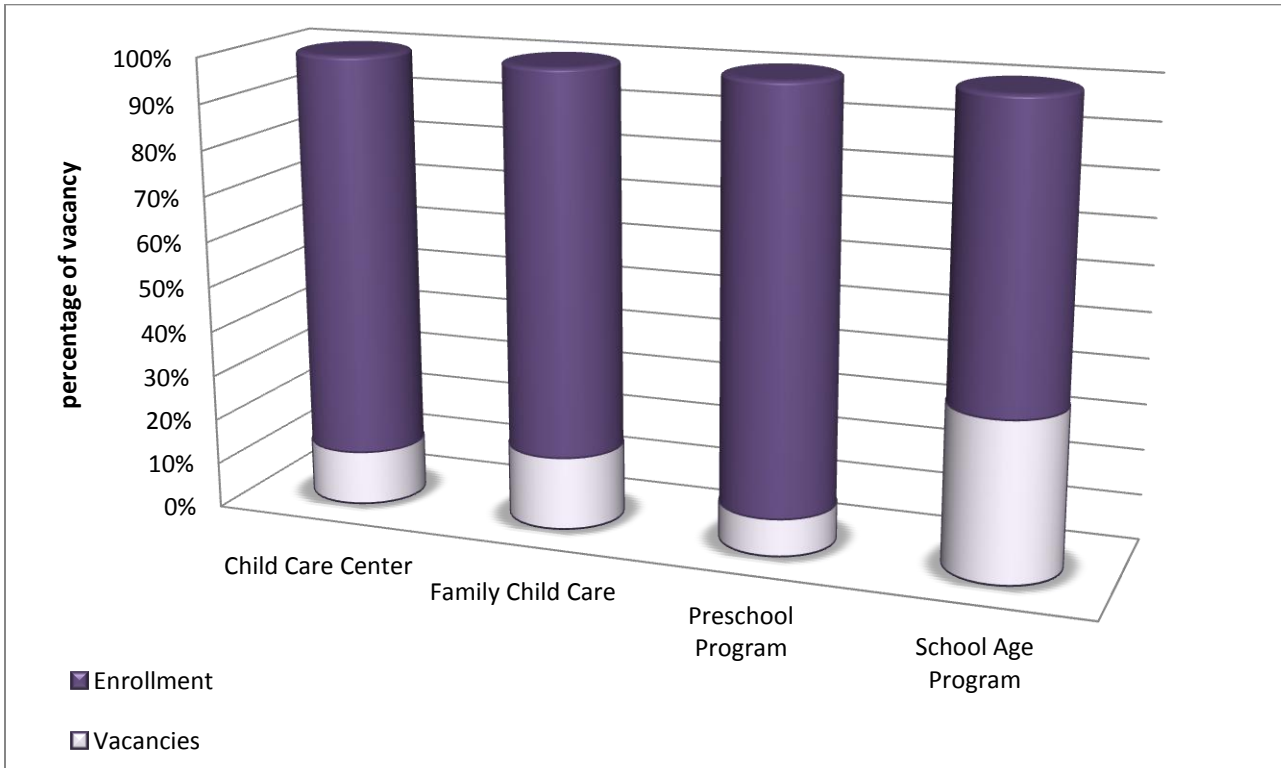
Please note that Trend in Capacity and Vacancy Chart does not follow consecutive years prior to 2010. The vacancy rate dramatically increased between 2010 and 2011 which can be attributed to economic downturn. Between 2012-2013 the vacancy rate decreased slightly, but still hasn't returned to the vacancy rates of previous years. The overall vacancy rate for Larimer County is 24%. The number of licensed slots does not include slots available at legally exempt programs. The vacancies reflect the total number of vacancies reported by each early childhood program.

## Trend in Number of Licensed Providers

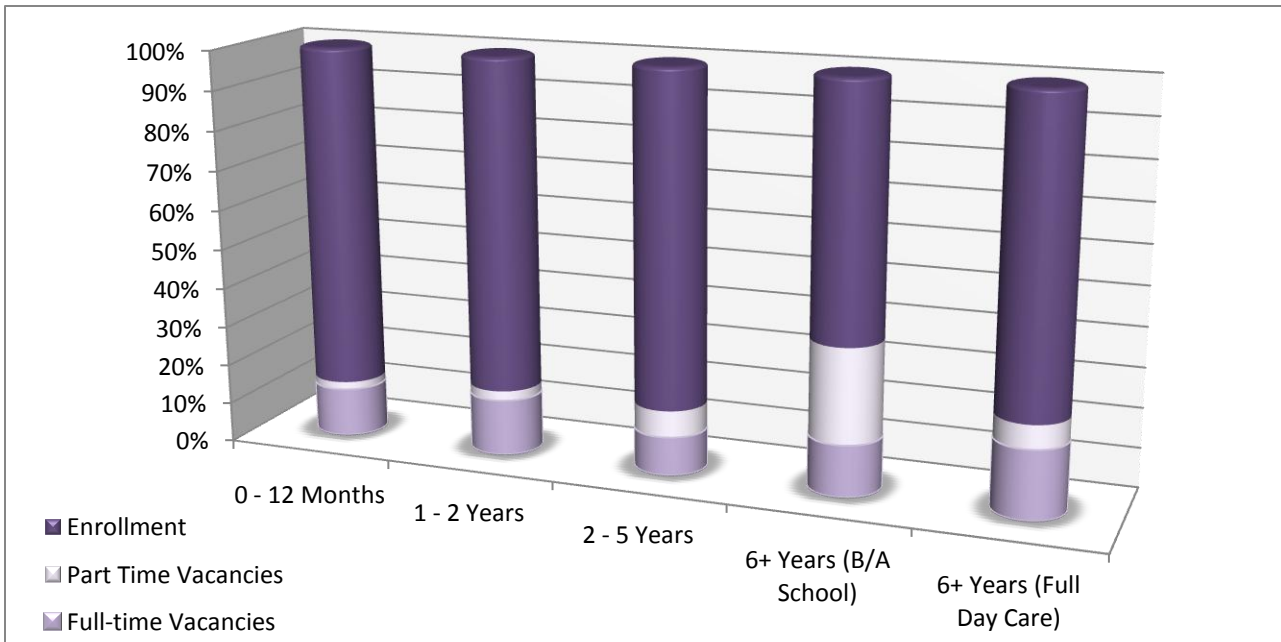


Please note that Trend in Number of Licensed Providers Chart does not follow consecutive years prior to 2010. Data is not available for 2002.

## July 2013 Vacancy Rate by License Type

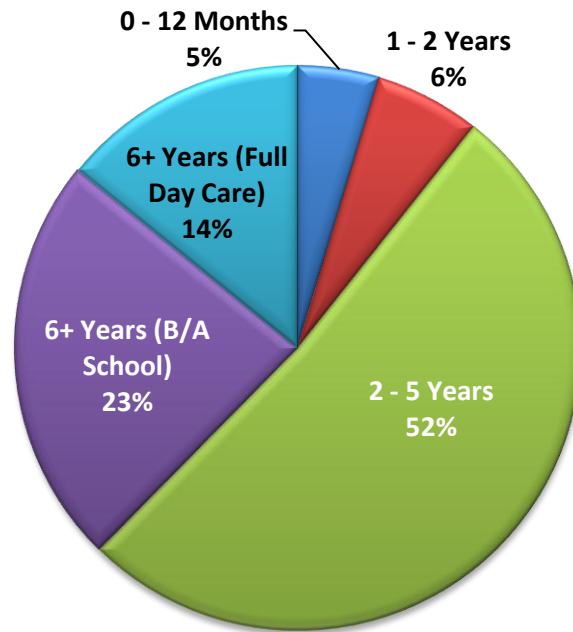


## July 2013 Vacancy Rate by Age Group



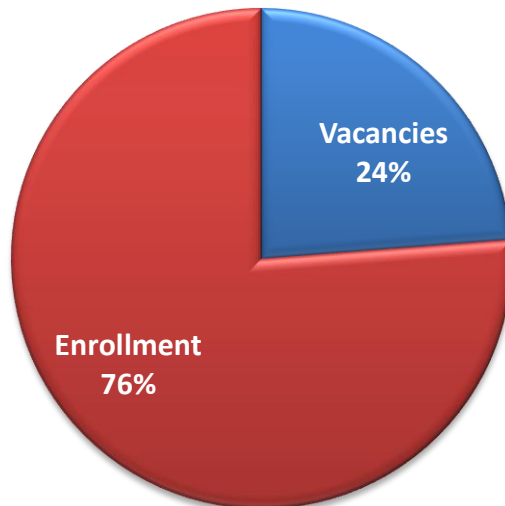
Vacancy rate charts compare providers' total vacancies to their preferred capacity (rather than their actual licensed capacities). This gives a more accurate reflection of available capacity.

## July 2013 Capacity by Age Group



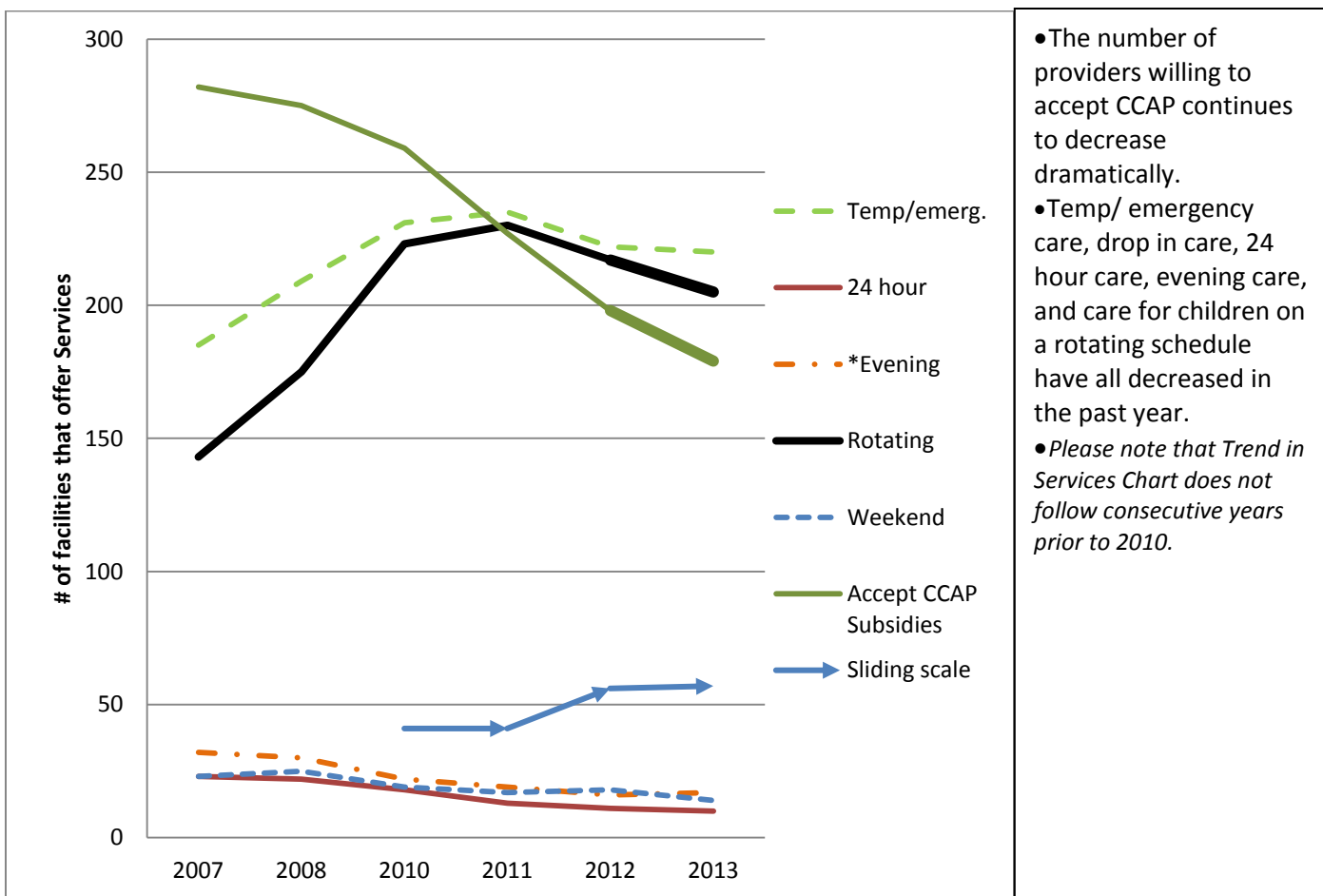
Population Age group	Preferred Capacity	Change from 2012
0 - 12 Months	539	-19
1 - 2 Years	701	-51
2 - 5 Years	6,002	+260
6+ Years (B/A School)	2,725	+90
6+ Years (Full Day Care)	1,644	+9
<b>Grand Total</b>	<b>11,611</b>	<b>+289</b>

## July 2013 County Wide Vacancy Rate

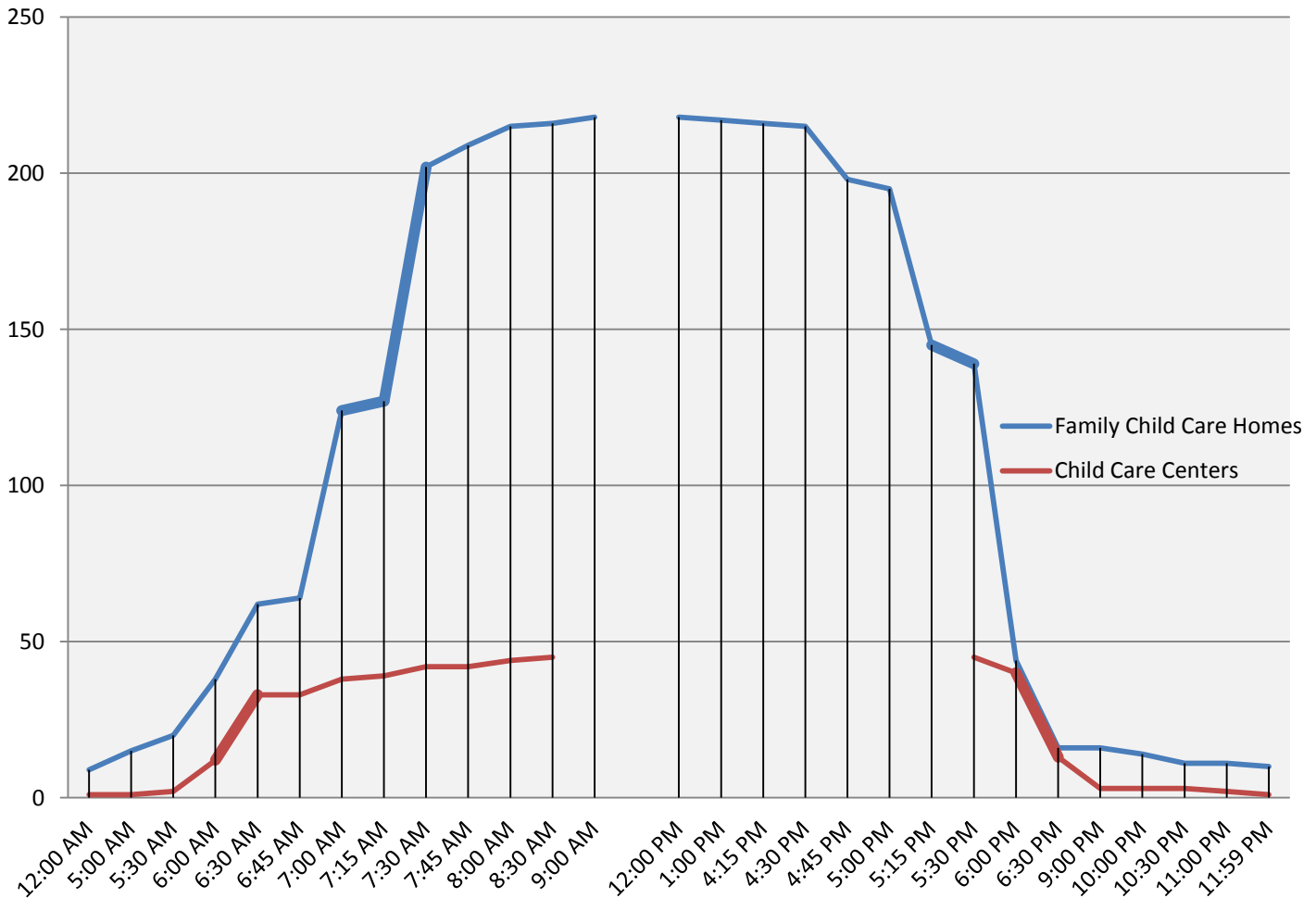


# July 2013 Services Offered by Child Care Programs in Larimer County

Services Offered	Centers	Family Child Care Homes	Preschools	School-Age Programs
Accept CCAP Subsidies	33	87	8	51
Drop-In	22	133	4	56
Evening (open later than 7 pm)	3	14		
Open 24-hour	1	9		
Rotating Schedule	30	131	4	40
Sliding Scale Fee	6		6	45
Temporary/ Emergency	27	144	5	44
Weekend (Open Saturday or Sunday)	3	11		



## Child Care Program Hours in July 2013



**Need 24 hour care?** Family Child Care Homes (FCCH): 9 FCCHs (3 in Loveland, 5 in Fort Collins, and 1 in Estes Park) are open 24 hours. Child Care Centers (Centers): 1 center is open, but only serves children with special needs.

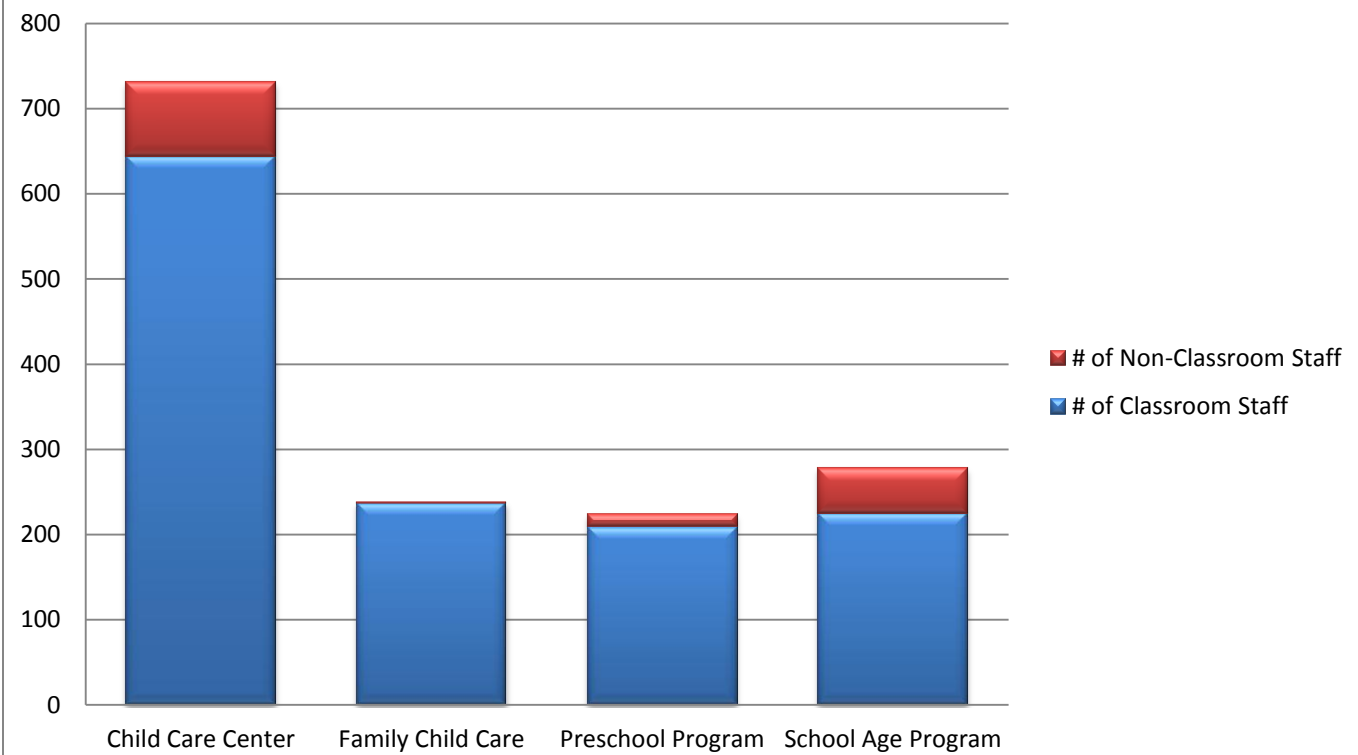
**Going to work early?** FCCHs: 20 are open before 6 am and 17% open by 6 am; 92% open by 7:30 am. Centers: 1 open at 5:30 am; 26% open by 6 am; 73% open by 6:30 am and 93% open by 7:30 am.

**Working late?** FCCHs: 33% close by 5 pm; 80% close by 5:30 pm and 93% close by 6 pm. 14 FCCHs are open until 9 pm and eleven are open until 10 pm (9 of which are also open 24 hours a day). Centers: 69% close by 6 pm; and 93% close by 6:30 pm. Of the three centers that are open later, one is a drop-in center (and does not accept CCAP), one serves children with special needs only, and one is located in Estes Park.

**Need weekend care?** 11 FCCHs and 3 centers (one drop-in, one serving special needs only, and one located in Estes Park) are open.

**When do families have the most options?** Most FCCHs open by 7 am and close by 5:30 pm, and centers open by 6:30 am and close by 6 pm; Monday – Friday.

## Number of Individuals Working In Child Care as of July 2013



383 providers or 97% of the providers in our database responded to this question.

## Number of Child Care Programs by City and License Type

	Bellvue	Berthoud	Estes Park	Fort Collins	Laporte	Loveland	Red Feather Lakes	Timnath	Wellington	Windsor	Grand Total
Child Care Center		1	2	33		9			1		46
Family Child Care	1	7	5	121	3	66		1	13	1	218
Preschool Program	1	4	2	42	1	16	1	1	3		71
School Age Program		2	2	36	1	16		2	2		61
<b>Grand Total</b>	<b>2</b>	<b>14</b>	<b>11</b>	<b>232</b>	<b>5</b>	<b>107</b>	<b>1</b>	<b>4</b>	<b>19</b>	<b>1</b>	<b>396</b>

## July 2013 Average Cost of Care by License Type and Age of Child

8/23/2013

Full time weekly cost of care in child care centers

<b>Age Group</b>	<b>Min \$</b>	<b>Max \$</b>	<b>Avg \$</b>
0-12 Months	\$203.35	\$341.00	\$278.83
1 - 2 Years	\$175.00	\$341.00	\$248.07
2 Years - 5 Years	\$130.83	\$341.00	\$211.88
6+ Years (Full Day Care)	\$160.00	\$230.00	\$203.13
6+ Years (B/A School)	\$103.00	\$182.00	\$129.65

Weekly cost of before and after school care or full time summer care in school age only programs

<b>Age Group</b>	<b>Min \$</b>	<b>Max \$</b>	<b>Avg \$</b>
6+ Years (Full Day Care)	\$130.00	\$249.00	\$192.81
6+ Years (B/A School)	\$86.75	\$126.00	\$90.47

Full time weekly cost of care in family child care homes

<b>Age Group</b>	<b>Min \$</b>	<b>Max \$</b>	<b>Avg \$</b>
0-12 Months	\$125.00	\$250.00	\$172.29
1 - 2 Years	\$125.00	\$250.00	\$172.53
2 Years - 5 Years	\$115.00	\$250.00	\$165.22
6+ Years (Full Day Care)	\$115.00	\$225.00	\$159.33
6+ Years (B/A School)	\$50.00	\$175.00	\$91.39